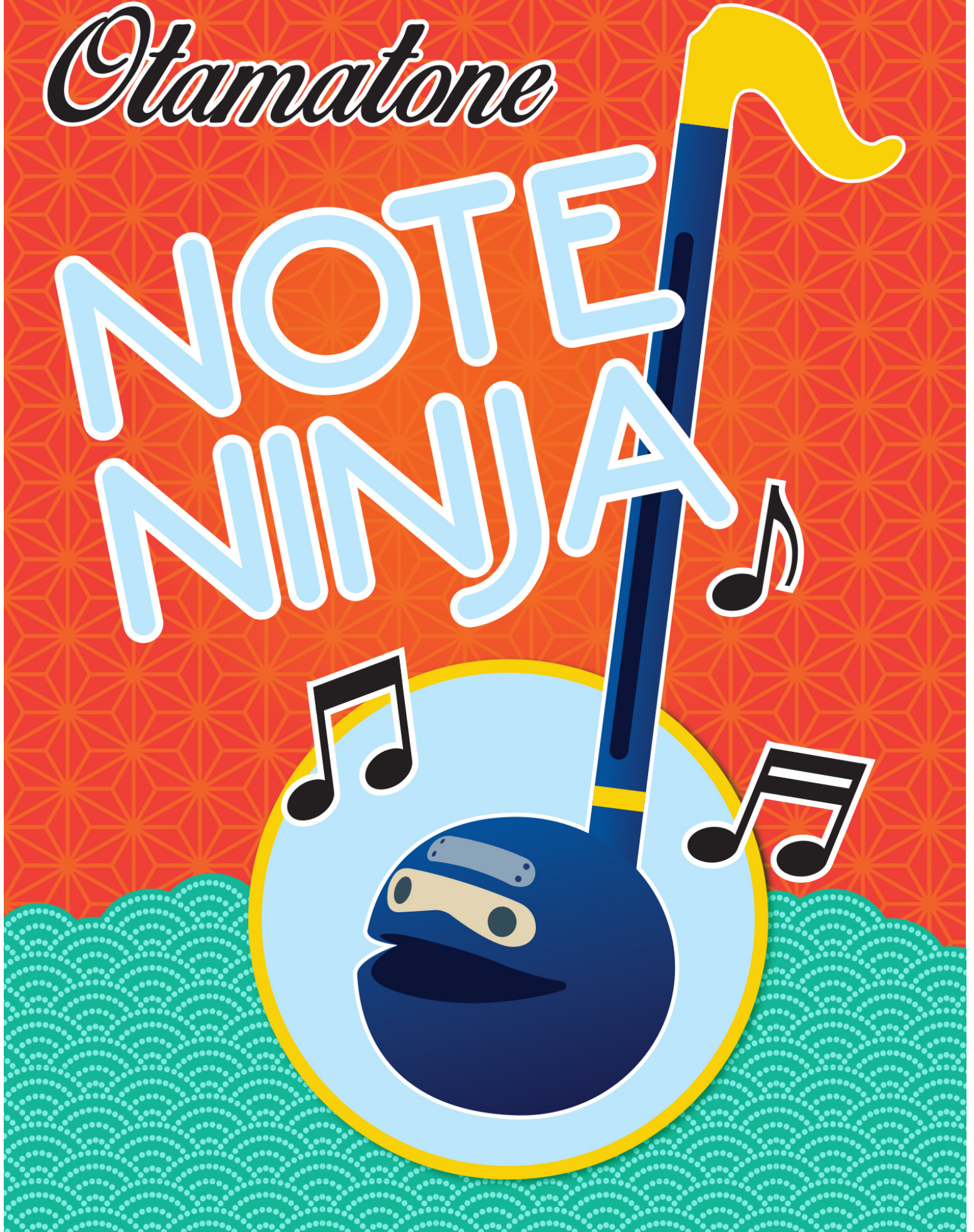


Otamatone

NOTE
NINJA

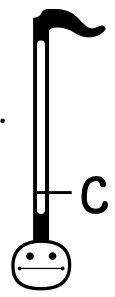
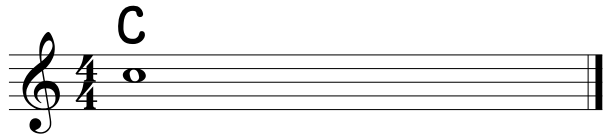




OTAMATONE SONGBOOK

GETTING STARTED

FIND C: Listen to the "C" and match this pitch on your Otamatone.



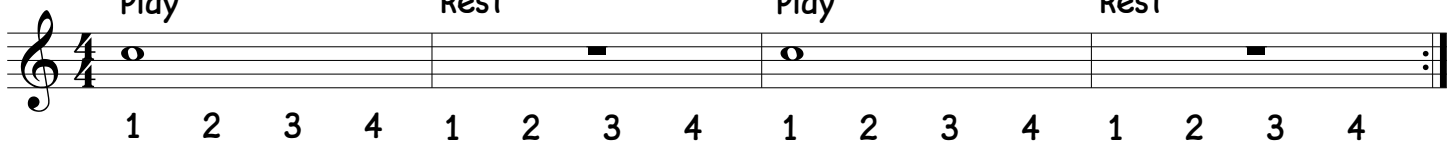
1

Play

Rest

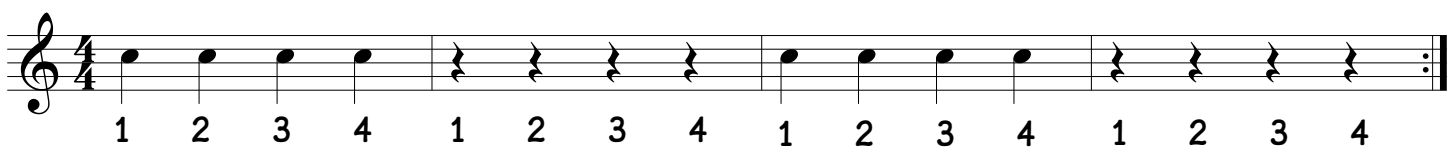
Play

Rest



2

Tap the strip to play each note.



3

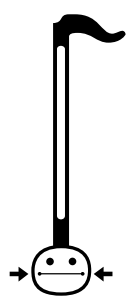
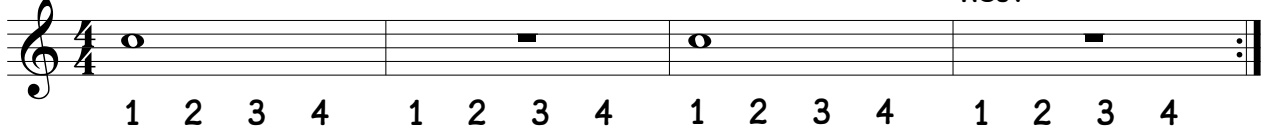
Squeeze the mouth for a wah-wah effect.

wah wah wah wah

Rest

wah wah wah wah

Rest



4

Putting them together!

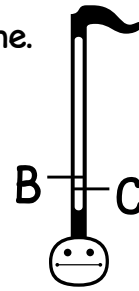
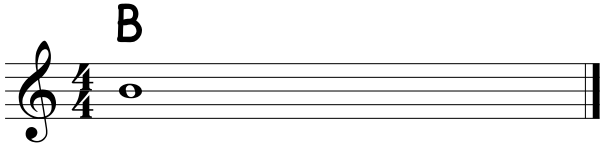
wah wah wah wah

wah wah wah wah

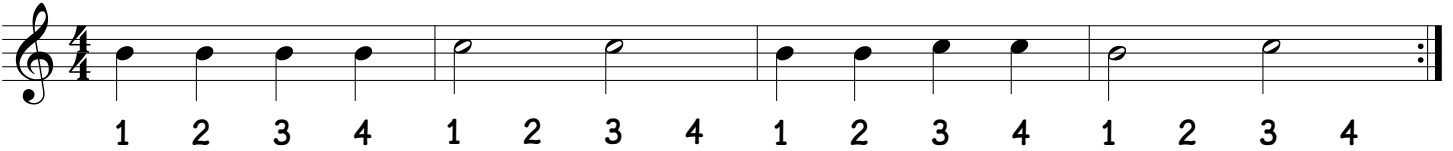
wah wah wah wah



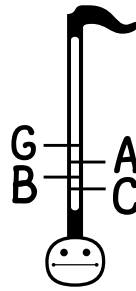
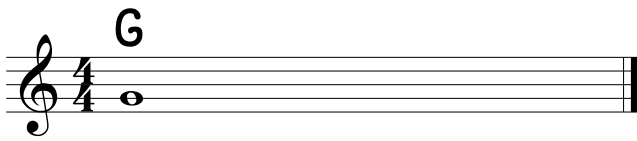
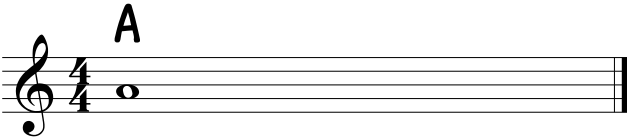
NEW NOTE: Listen to the "B" and match this pitch on your Otamatone.



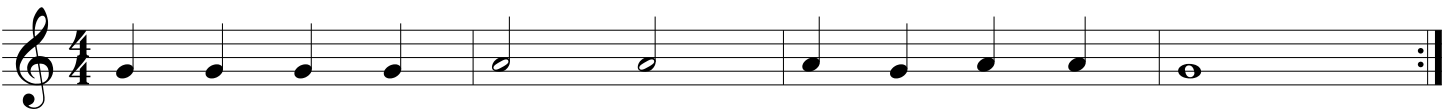
5 Bs and Cs



TWO NEW NOTES: Listen to the "A" and "G" and match these pitches on your Otamatone.



6 Gs and As



7 ALL TOGETHER!



8 UP and DOWN



9 HOT CROSS BUNS

Musical notation for 'HOT CROSS BUNS' in 4/4 time. The first staff contains four measures: a half note G4, a quarter note A4, a quarter note B4, and a half note C5. The second staff contains eight measures: a quarter note G4, a quarter note A4, a quarter note B4, a quarter note C5, a quarter note G4, a quarter note A4, a quarter note B4, and a quarter note C5. The third staff contains four measures: a half note G4, a quarter note A4, a quarter note B4, and a half note C5. The piece ends with a double bar line and repeat dots.

10 OTAMATONE SALSA

Musical notation for 'OTAMATONE SALSA' in 4/4 time. The first staff contains eight measures: a quarter note G4, a quarter note A4, a quarter note B4, a quarter note C5, a quarter note G4, a quarter note A4, a quarter note B4, and a quarter note C5. The second staff contains four measures: a half note G4, a quarter note A4, a quarter note B4, and a half note C5. The piece ends with a double bar line and repeat dots.

11 OTAMATONE DANCE

Musical notation for 'OTAMATONE DANCE' in 4/4 time. The first staff contains ten measures: a quarter note G4, a quarter note A4, a quarter note B4, a quarter note C5, a quarter note G4, a quarter note A4, a quarter note B4, a quarter note C5, a quarter note G4, and a quarter note A4. The piece ends with a double bar line and repeat dots.

12 OTAMATONE MARCH

Musical notation for 'OTAMATONE MARCH' in 4/4 time. The first staff contains eight measures: a quarter note G4, a quarter note A4, a quarter note B4, a quarter note C5, a quarter note G4, a quarter note A4, a quarter note B4, and a quarter note C5. The second staff contains four measures: a half note G4, a quarter note A4, a quarter note B4, and a half note C5. The piece ends with a double bar line and repeat dots.

13 MERRILY WE ROLL ALONG

Musical notation for 'MERRILY WE ROLL ALONG' in 4/4 time. The first staff contains eight measures: a quarter note G4, a quarter note A4, a quarter note B4, a quarter note C5, a quarter note G4, a quarter note A4, a quarter note B4, and a quarter note C5. The second staff contains four measures: a half note G4, a quarter note A4, a quarter note B4, and a half note C5. The piece ends with a double bar line and repeat dots.

14 ONE, TWO, THREE

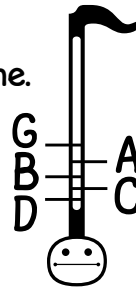
New Time Signature: 3 Beats per measure

15 RUSH HOUR ROCK

16 NORWEGIAN MELODY

GOING HIGHER! ANOTHER NEW NOTE

Listen to the "D" and match this pitch on your Otamatone.



17 GO TELL AUNT RHODY

18 LIGHTLY ROW