

Name: _____

Date: _____

Compose YOURSELF!

Phrasing/Balance

Directions:

Using your instrument, or a piano, create your own piece!

How do you write or compose music? It is up to you. Everyone approaches their *how* in a different way and that is ok! Musical composition begins with your imagination and some practical knowledge, such as knowing some basics about music theory and the instrument(s) you are writing for.

General compositional thoughts:

Share your story

What are you trying to say through your music?
Are you sharing something about yourself?
Are you conveying a specific feeling or mood?
Or, is it just **music** that changes feeling and is abstract?

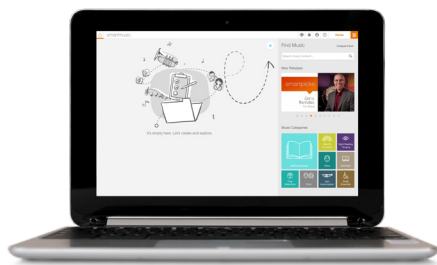
Start with a musical element focus

This assignment has a focus on phrasing for your composition. Your piece should focus on two melodic ideas that are each four measures in length. Improvising a melody can be fun and rewarding as well and can help you in the creation of your melodies.



Create some limits

Sometimes having too many options can make it hard to write music. Where do I begin? Limits and 'boundaries' can help spark your creativity!



For even more fun, **log into smartmusic.** and go to the *COMPOSE* feature where you can input your notes and rhythms and hear them played back. If you continue to be inspired, add more measures and keep on writing!

Directions:

- Write two melodies that are each four measures in length
- Use only the notes in the Note Bank.
- Use the note values shown below.
- Do not use any rests!
- It's important to play the piece on your instrument, as you want the melody to be something playable.

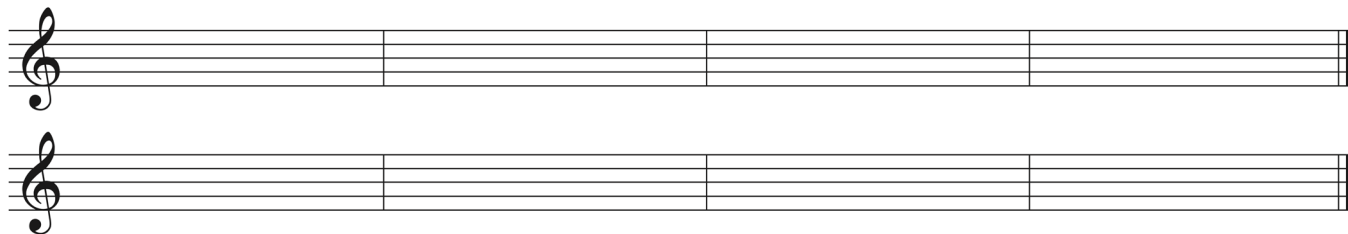
Note Bank



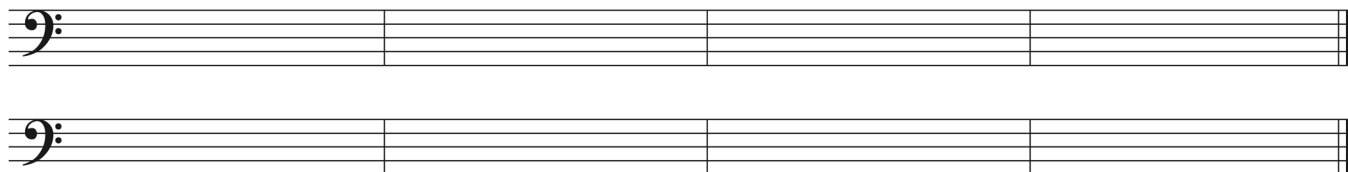
Note Values



Sketch space for TREBLE CLEF instruments:



Sketch space for BASS CLEF instruments:



Sketch space for ALTO CLEF instruments:

