

Compose YOURSELF!

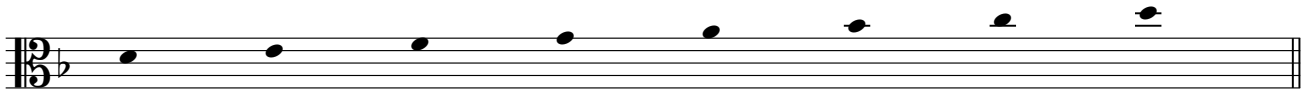
Some Notes on Melody

Alto Clef

Directions:

- In the measures below, continue the phrases in the blank measures (keep the idea of development in mind).
- Using the workspace below, change the melody of Zero Gravity (just 2 bars) using augmentation (making some or all note values longer) and again by diminution (making note values shorter).
- On a separate sheet of manuscript paper, take a different melody and recompose it. Keep the same rhythms but use a different starting note.
- Change the melody using augmentation and diminution.
- List the intervals for this melody (see Zero Gravity worksheet) or analyze melodies of your favorite composers (Beethoven, Billie Eilish?). What are the majority of intervals?
- Feeling adventurous? Compose a contrasting B or middle section. Will it be different or based upon the first theme? Listen to Zero Gravity again and see how the B section (measures 25–32) compares to the starting melody at measure 5. Now write your own masterpiece!

Zero Gravity is based on the notes in this scale.
You can use them when you complete the exercises below.



5 (Contour: note to note) →

6 P4 m3 M2

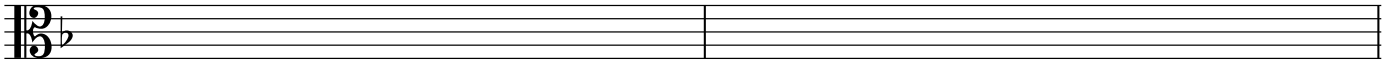
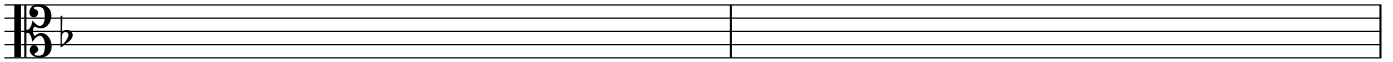
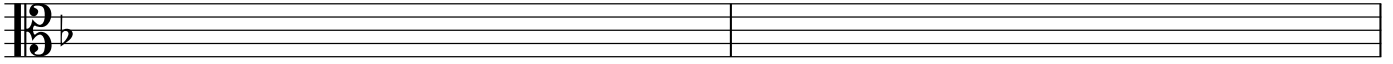
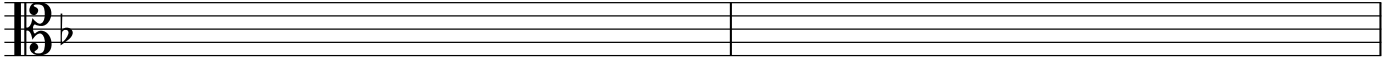
(General contour) →

7 continue the phrase from measures 5-6 using similar rhythms 8

9 10

11 continue the phrase from measures 9-10 using your own rhythms 12

your melody



BGs (Backgrounds)

your melody

(remember: when the melody is active,
the background melody is less active and vice versa)

A musical staff consisting of two systems. The top system is labeled "your melody" and the bottom system is labeled "your BG melody". Both systems have a treble clef and a key signature of one flat (B-flat). The staff is divided into four measures by vertical bar lines. A large left-facing curly bracket groups both systems.

A musical staff consisting of two systems. Both systems have a treble clef and a key signature of one flat (B-flat). The staff is divided into four measures by vertical bar lines. A large left-facing curly bracket groups both systems.