

# Compose YOURSELF!

## Some Notes on Melody

### Bass Clef

#### Directions:

- In the measures below, continue the phrases in the blank measures (keep the idea of development in mind).
- Using the workspace below, change the melody of Zero Gravity (just 2 bars) using augmentation (making some or all note values longer) and again by diminution (making note values shorter).
- On a separate sheet of manuscript paper, take a different melody and recompose it. Keep the same rhythms but use a different starting note.
- Change the melody using augmentation and diminution.
- List the intervals for this melody (see Zero Gravity worksheet) or analyze melodies of your favorite composers (Beethoven, Billie Eilish?). What are the majority of intervals?
- Feeling adventurous? Compose a contrasting B or middle section. Will it be different or based upon the first theme? Listen to Zero Gravity again and see how the B section (measures 25–32) compares to the starting melody at measure 5. Now write your own masterpiece!

Zero Gravity is based on the notes in this scale.  
You can use them when you complete the exercises below.

The image shows a musical staff in bass clef with a key signature of one flat (Bb). The first staff shows a scale of notes: Bb, C, D, E, F, G, A, Bb. The second staff shows a melody starting at measure 5. The notes are: Bb (quarter), C (quarter), D (quarter), E (quarter), F (quarter), G (quarter), A (quarter), Bb (quarter), C (quarter), D (quarter), E (quarter), F (quarter), G (quarter), A (quarter), Bb (quarter). Above the notes, intervals are labeled: M2, M2, M2, M2, M2, P4, m3, M2. A red line above the notes indicates the contour, with an arrow pointing to it from the text "(contour: note to note)". A red line below the notes indicates the general contour, with an arrow pointing to it from the text "(general contour)".

7 continue the phrase from measures 5-6 using similar rhythms 8

A blank musical staff in bass clef with a key signature of one flat, divided into two measures for exercise 7.

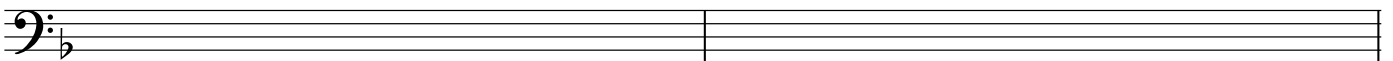
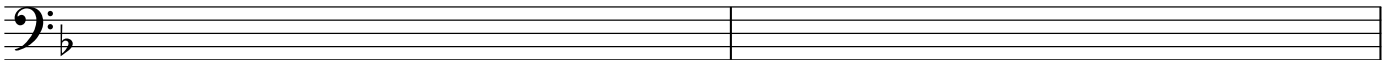
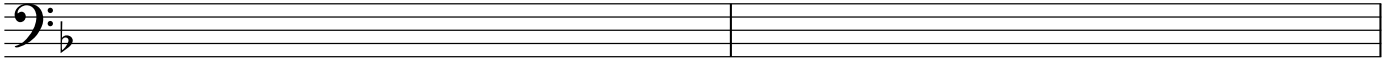
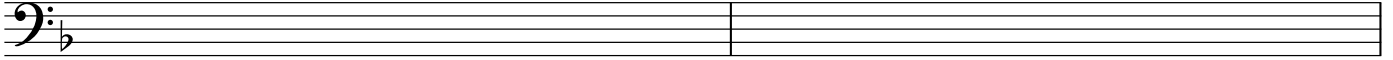
9 10

A musical staff in bass clef with a key signature of one flat, showing a melody for exercise 9-10. The notes are: Bb (quarter), C (quarter), D (quarter), E (quarter), F (quarter), G (quarter), A (quarter), Bb (quarter), C (quarter), D (quarter), E (quarter), F (quarter), G (quarter), A (quarter), Bb (quarter).

11 continue the phrase from measures 9-10 using your own rhythms 12

A blank musical staff in bass clef with a key signature of one flat, divided into two measures for exercise 11-12.

your workspace



## BGs (Backgrounds)

your B section melody

(remember: when the melody is active, the background melody is less active and vice versa)